

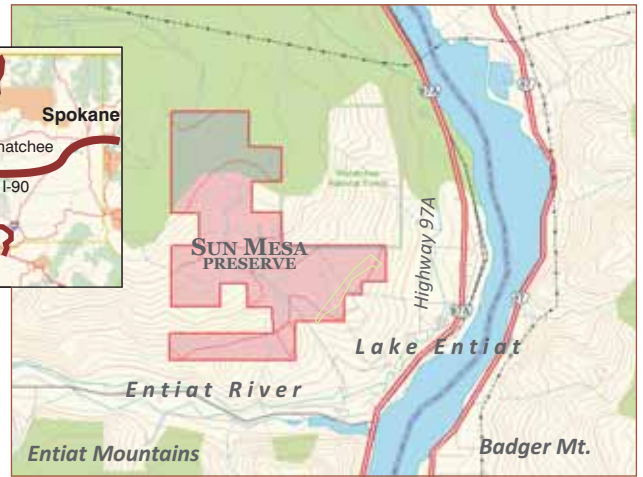
MASTER PLAN

AUGUST 2009

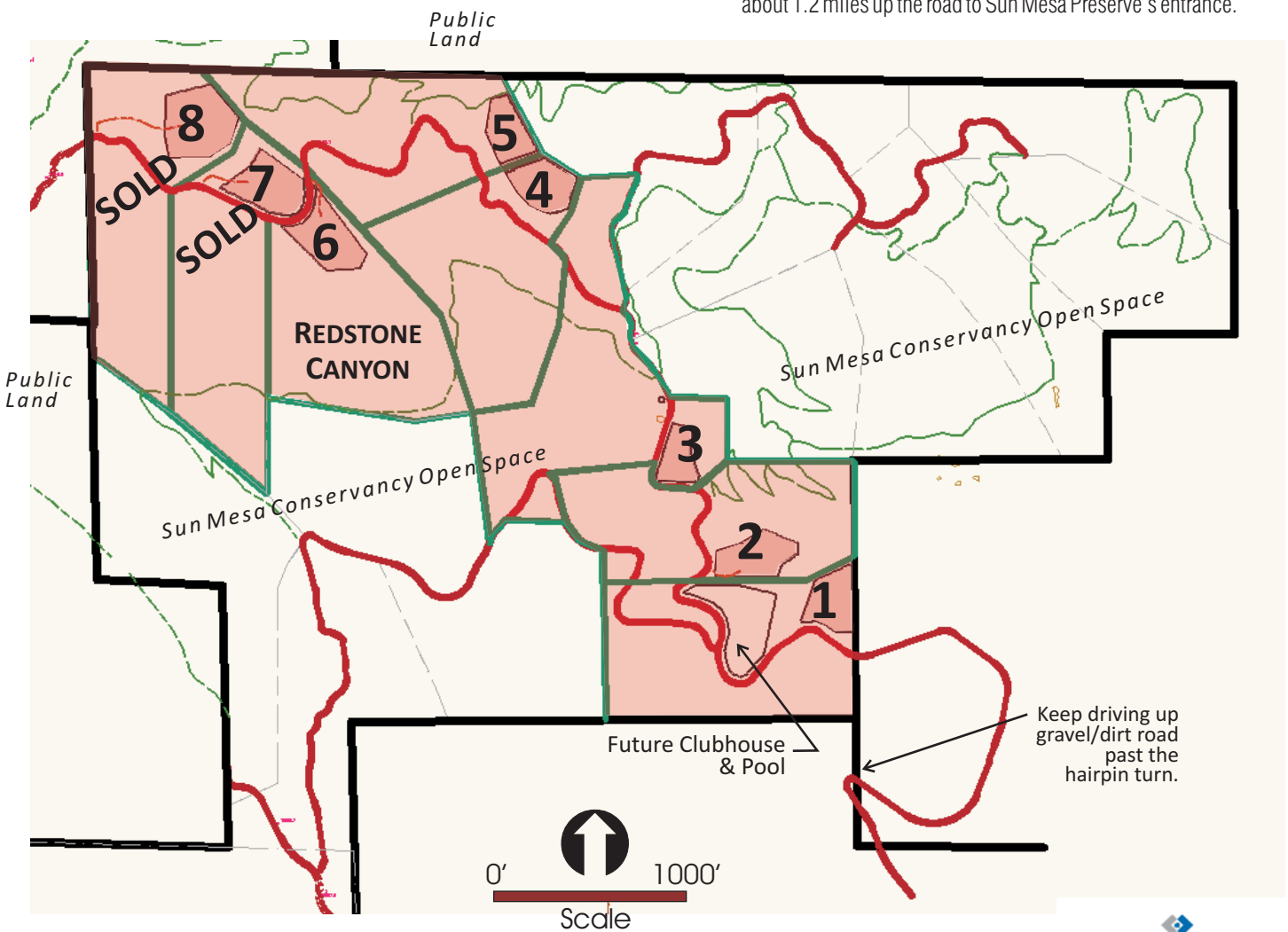
**REDSTONE CANYON
PHASE ONE**

Homesite	Price
1	\$159,000
2	Reserved
3	\$129,000
4	\$145,000
5	\$155,000
6	\$139,000
7	SOLD
8	SOLD

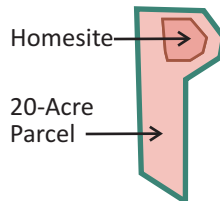
(All parcels are 20+ acres and include power, phone, fiber optic and access to planned trails & clubhouse. Individual or shared wells.)



From Wenatchee: Go 15 miles north on Highway 97A, Left onto Shearson St, Right onto Entiat Way, Left at Auvil and follow the signs about 1.2 miles up the road to Sun Mesa Preserve's entrance.



www.sunmesapreserve.com



Contact Scott Pearl (206-232-9779) or Travis Knoop (509-860-4321)

This project is under construction and is scheduled for completion in 2010. The master plan and planned amenities presented are approximate, continue to evolve and are subject to change without notice. Homesites are offered subject to prior sales, price change or withdrawal without notice and by approval of purchase by Seller. Buyers should rely only on information contained within the Purchase & Sale Agreement. Copyright © 2009 Entiat Properties, LLC.